

# DISSOLVED OXYGEN METER SERIES



## Online Dissolved Oxygen Meter T6546 Function

Industrial online dissolved oxygen meter is an online water quality monitor and control instrument with microprocessor. The instrument is equipped with fluorescent dissolved oxygen sensors. The online dissolved oxygen meter is a highly intelligent online continuous monitor. It can be equipped with fluorescent electrodes to automatically achieve a wide range of ppm measurement. It is a special instrument for detecting oxygen content in liquids in environmental protection sewage related industries.

## Typical Use

The online dissolved oxygen meter is a special instrument for detecting oxygen content in liquids in environmental protection sewage related industries. It has the characteristics of fast response, stability, reliability, and low use cost, and is suitable for large-scale use in water plants, aeration tanks, aquaculture, and sewage treatment plants.

## Mains Supply

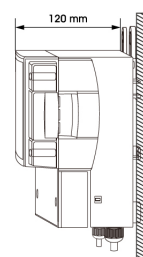
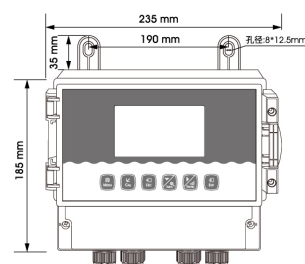
85~265VAC $\pm$ 10%, 50 $\pm$ 1Hz, power  $\leq$ 3W;

9~36VDC, power consumption  $\leq$ 3W;

## Measuring Range

Dissolved Oxygen: 0~40mg/L, 0~400%;

Customizable measuring range, displayed in ppm unit.



## Online Dissolved Oxygen Meter T6546

### Features

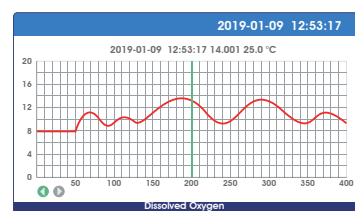
1. Large display, standard 485 communication, with online and offline alarm, 235×185×120mm meter size, 7.0 inch large screen display.
2. Fluorescence dissolved oxygen electrode adopts optical physics principle, no chemical reaction in the measurement, no influence of bubbles, aeration/anaerobic tank installation and measurement are more stable, maintenance-free in the later period, and more convenient to use.
3. The data curve recording function is installed, the machine replaces the manual meter reading, and the query range is arbitrarily specified, so that the data is no longer lost.
4. Carefully select materials and strictly select each circuit component, which greatly improves the stability of the circuit during long-term operation.
5. The new choke inductance of the power board can effectively reduce the influence of electromagnetic interference, and the data is more stable.
6. The design of the whole machine is waterproof and dustproof, and the back cover of the connection terminal is added to extend the service life in harsh environments.
7. Panel/wall/pipe installation, three options are available to meet various industrial site installation requirements.



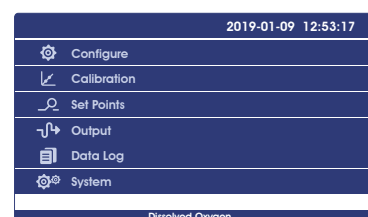
Measurement mode



Calibration mode



Trend chart

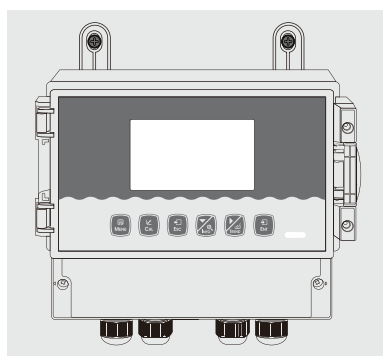
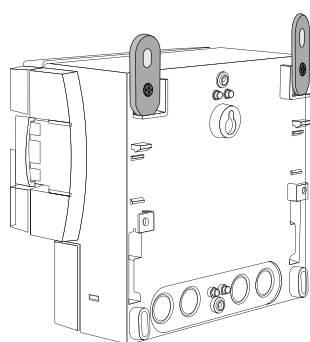


Setting mode

## Electrical connections

**Electrical connection** The connection between the instrument and the sensor: the power supply, output signal, relay alarm contact and the connection between the sensor and the instrument are all inside the instrument. The length of the lead wire for the fixed electrode is usually 5-10 meters, and the corresponding label or color on the sensor Insert the wire into the corresponding terminal inside the instrument and tighten it.

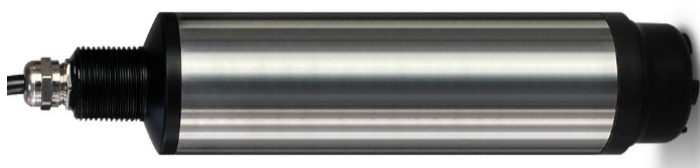
## Instrument installation method



## Technical specifications

Measurement range	0~40.00mg/L; 0~400.0%
Measurement unit	mg/L; %
Resolution	0.01mg/L; 0.1%
Basic error	±1%F.S
Temperature	-10~150°C
Temperature Resolution	0.1°C
Temperature Basic error	±0.3°C
Current Output	4~20mA, 20~4mA, (load resistance<750Ω)
Communication output	RS485 MODBUS RTU
Relay control contacts	5A 240VAC, 5A 28VDC or 120VAC
Power supply (optional)	85~265VAC, 9~36VDC, power consumption≤3W
Working conditions	No strong magnetic field interference around except the geomagnetic field.
Working temperature	-10~60°C
Relative humidity	≤90%
IP rate	IP65
Instrument Weight	1.5kg
Instrument Dimensions	235×185×120mm
Installation methods	Wall mounted

## Digital Dissolved Oxygen Sensor



<b>Model No.</b>	<b>CS4760D</b>
<b>Power/Output</b>	9~36VDC/RS485 MODBUS RTU
<b>Measuring Mode</b>	Fluorescence method
<b>Housing Material</b>	POM+316LStainless steel
<b>Waterproof Rating</b>	IP68
<b>Measuring Range</b>	0-20mg/L
<b>Accuracy</b>	±1%F.S
<b>Pressure Range</b>	≤0.3Mpa
<b>Temperature Compensation</b>	NTC10K
<b>Temperature Range</b>	0-50°C
<b>Calibration</b>	Anaerobic Water Calibration and Air Calibration
<b>Connection Method</b>	4 core cable
<b>Cable Length</b>	Standard 10m cable, can be extended
<b>Installation Thread</b>	G3/4"
<b>Application</b>	General application, river, lake,drink water, environment protection ,etc